

INSTALLATION OF YOUR NEPTUNE BATHING SHOWER ENCLOSURE IS QUICK AND EASY.
HOWEVER, PLEASE READ THESE INSTRUCTIONS CAREFULLY AS THE
MANUFACTURER CANNOT TAKE RESPONSIBILITY FOR ISSUES ARISING FROM INCORRECT
INSTALLATION.

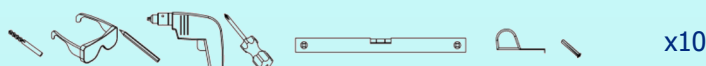
We recommend that the Neptune Bathing Shower Enclosure is installed by a suitably qualified person and that local building and water regulations are followed. Check for concealed water and gas pipes and electrical cables within the building structure prior to drilling.

Wear suitable protective equipment i.e. safety glasses, gloves etc. during installation.

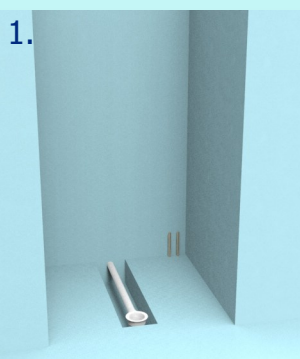
The surface finish of every Neptune Bathing Shower Enclosure is designed to give years of trouble free usage but it should be protected with a soft blanket or similar during installation. Be sure to use a suitable protection within the tray while installing the product and DO NOT place tools or hard objects such as screws etc. on the gloss surface of the shower as scratching can occur.

The Neptune Bathing Shower Enclosure is supplied in two or three parts to ease access into the bathroom. Each shower component should be carried by two people to avoid damage while climbing stairs, negotiating corners etc. DO NOT DRAG THE NEPTUNE BATHING SHOWER ENCLOSURE ALONG THE FLOOR.

CLEANING - USE ONLY WATER AND DETERGENT, DO NOT USE AGGRESSIVE HIGH Ph , ACIDIC OR ABRASIVE CLEANERS,ETC.



This is all you need to begin the installation of a Neptune shower!

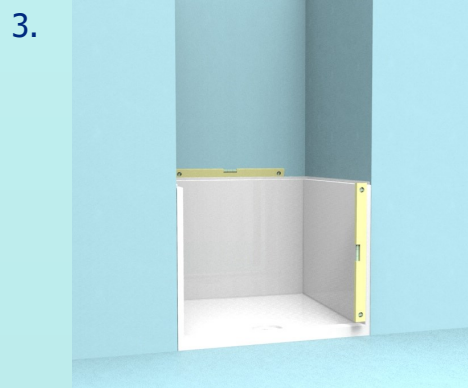
- 
 - Water supply (hot / cold depending on shower type being installed),
 - Waste fitting (below floor type shown) and possibly an electrical supply if an electric shower is being installed.

Follow shower valve / electric shower manufacturer's guidelines for details of specific requirements

IF YOU NEED TO RUN YOUR WASTE ABOVE THE FLOOR, YOU WILL NEED A NEPTUNE BATHING LIFTING KIT (AVAILABLE SEPERATELY). PLEASE FOLLOW INSTRUCTIONS SUPPLIED WITH THE LIFTING KIT OR ONLINE. WASTE POSITION DETAILS ARE AVAILABLE IN PRODUCT SPECIFICATION SHEETS (ALSO AVAILABLE ONLINE).

- 

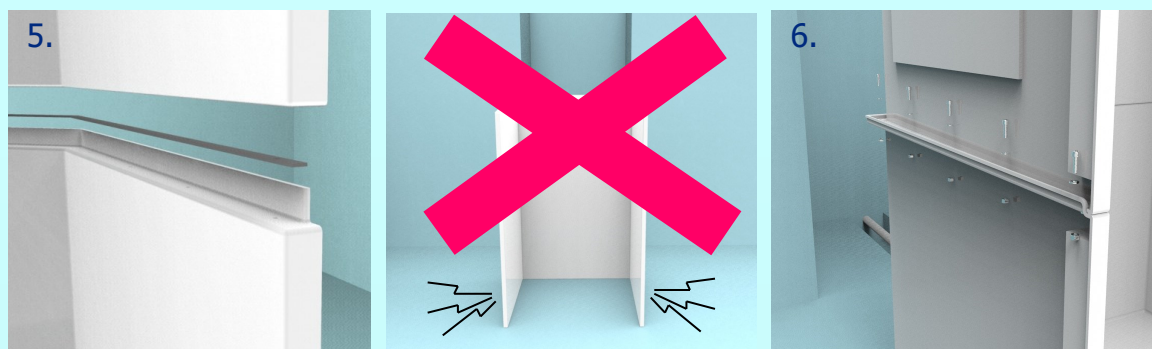
CHECK FLOOR IS LEVEL AND
WALLS ARE PLUMB BEFORE
STARTING

- 

Place the tray section of the Neptune Bathing shower in position and check for Level horizontally from left to right and check for Plumb vertically.

(3). Also check that underside at front and rear is in contact with the ground. The rear will need support for making plumb.

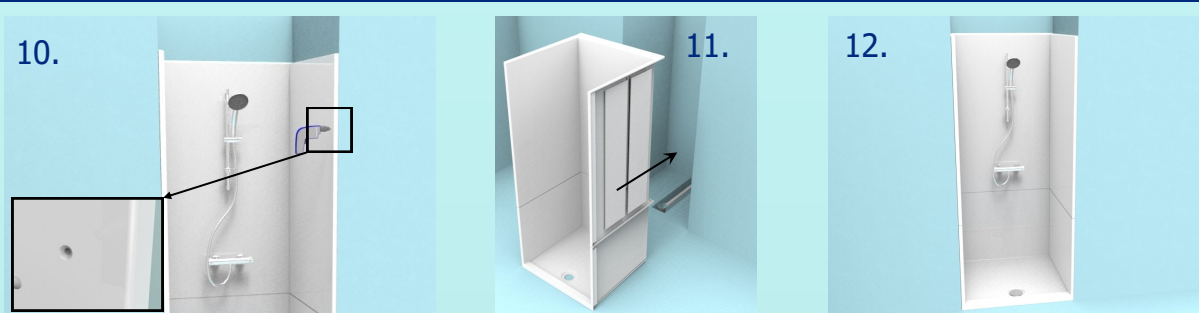
Carefully **Lift** the tray section away from the bathroom walls and attach the upper section (s) of the shower. Note the gasket between the joints (5) — care should be taken to avoid damage to it. Install the nuts and bolts in each hole in the joint.(6).
DO NOT OVER TIGHTEN THE BOLTS AS DAMAGE TO THE SHOWER MAY RESULT



Follow the manufacturers instructions and mark / drill holes to suit the shower valve or electric shower being fitted (7). Install the shower valve (8). Valves and risers may be attached to the flat wall panels if they are drilled through only to the timber core (9). Screws should secure into the timber. TIP— apply a piece of masking tape over the area to be drilled before attempting to drill the Neptune Bathing Shower Enclosure. The tape will prevent the drill from skating and scratching the surface.



Carefully **Lift** the Neptune Bathing Shower Enclosure back into the alcove and mark through the pre drilled holes in the edges as shown (10 inset). Drill and install suitable wall plugs according to the wall type (10). **Lift** the Neptune Bathing Shower Enclosure back into its final position, connecting the water (and electrical supply) while doing so (11). Flexi pipes may be used for water connections.



Install the waste fitting recheck for plumb and screw the Neptune Bathing Shower Enclosure to the walls, taking care not to overtighten the screws. The shower door may now be installed according to manufacturers instructions (13) and can be attached directly to the Neptune Leak free shower enclosure, hiding the predrilled holes illustrated in (10).

